



2019

Everything Old Is New Again

Caller: David Potter

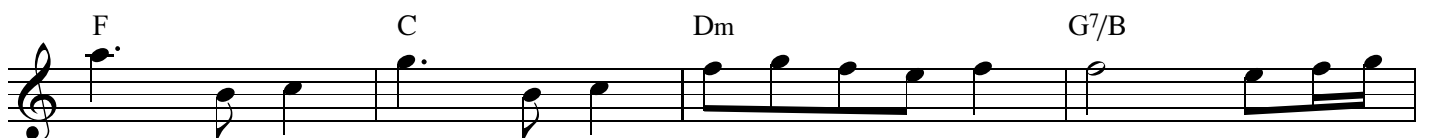
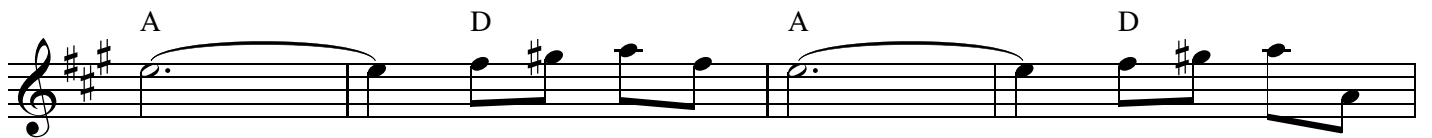
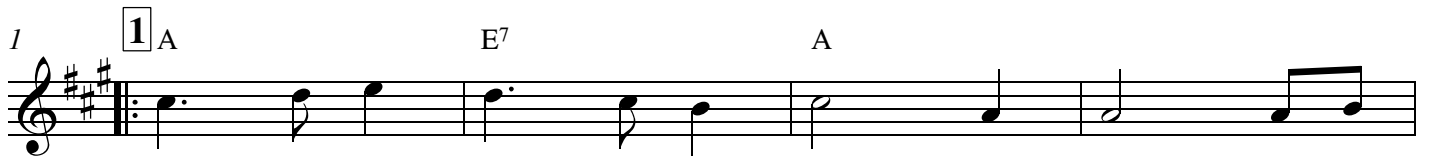
Saturday 3.45pm / Bundanoon Club

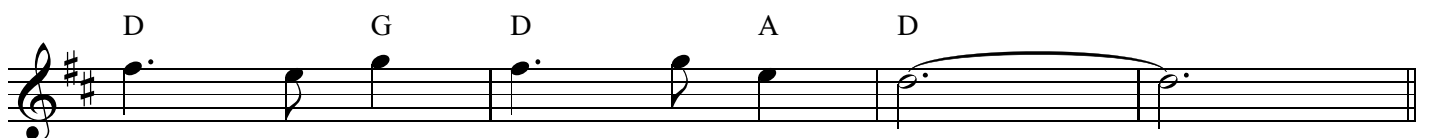
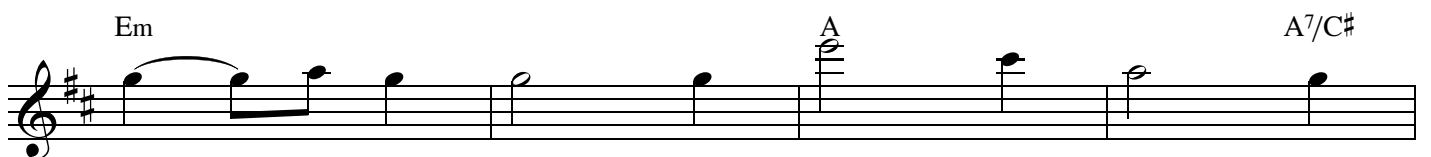
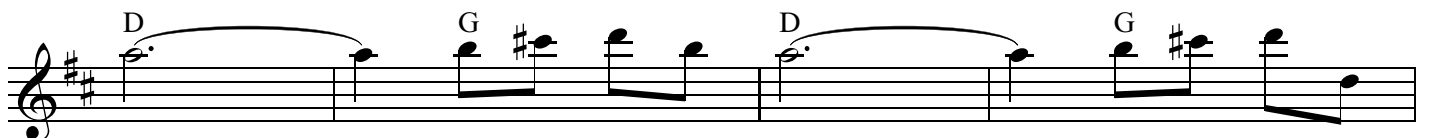
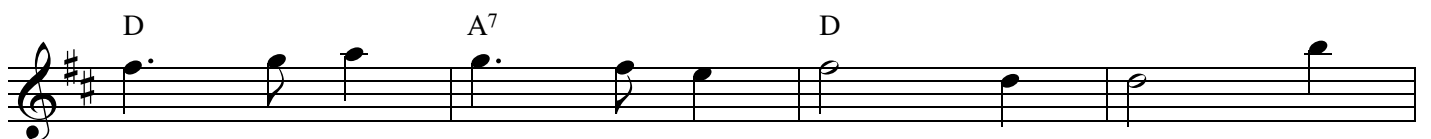
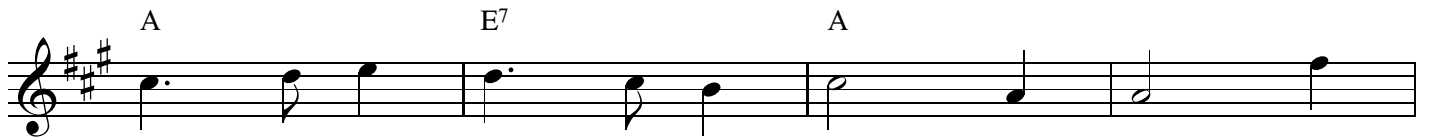
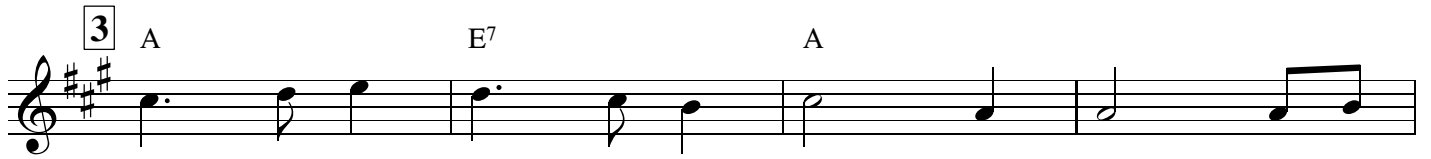
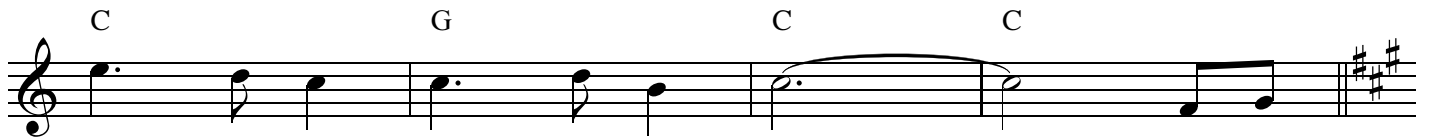
Lead Musician: Kathy Potter

Alice

G.P. Telemann
arranged by Leo Dent
and Kathy Potter

Intro





Arrival of the Queen of Sheba in D

G. F. HANDEL
arranged by Kathy Potter

D

3 D E⁷ A E A D

6 A⁷ D A Bm F[#]m

9 G D Em A D E F[#] G A B C[#] D

12 A A

14 D A D A D **fine**

17 Bm F[#]m D A D D

20 Em A D Bm F[#]m G Bm F[#]m Bm

23 F[#]m Bm Em F[#]7 Bm Em

26 F[#]7 D C[#]m Bm

29 C[#]m D Em F[#]7 Bm Em F[#]7 Bm **D.C. al fine**

Rondo Alla Turca

As written 7 x

Mozart

The image displays a musical score for the Rondo Alla Turca by Wolfgang Amadeus Mozart. The score is written in 2/4 time and consists of an Intro and seven repeated sections. The key signature is one sharp (F#), and the piece is in the key of A minor. The Intro begins with a treble clef and a 2/4 time signature, followed by a series of eighth notes. The first section is marked with a repeat sign and a first ending bracket. The score includes guitar chords (Am, D°, E, Em, G, C, F°) and a trill in the final section. The piece concludes with a double bar line and a key signature change to two sharps (F# and C#).

Intro Am D° Am D° Am E *trm* Am

1 Am

Em Em

Am

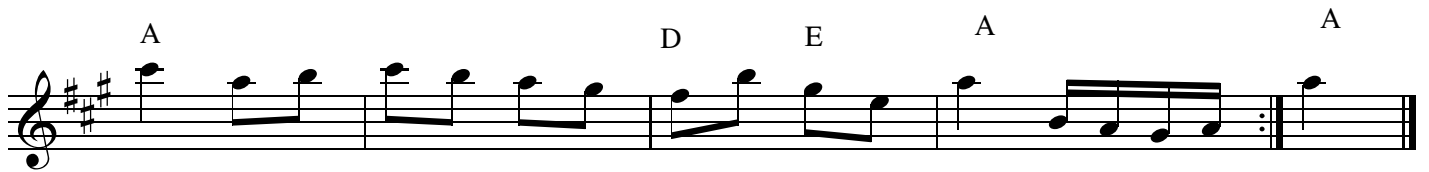
Em C

G C G

Am E Am E

Am Am F°

D° Am D° Am E *trm* Am



Last time only

Handel with Care

Bourree

Play 3 times as writ

G. F. Handel

1. D Bm D Bm G Bm⁷ A⁷ D A⁷ D A⁷ D

6. Em A D Bm Em A⁷ D A D A

10. D Bm⁷ Em D A 1. D 2. D

John Tallis Canon

♩ = 120

G C D G C D

Second part start here

6 G C D G C D

10 G C D G C D

14 G C D G C D

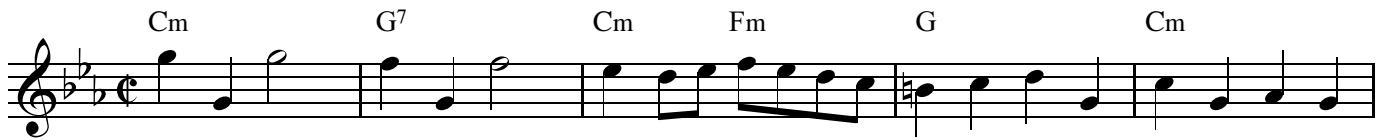
Playing in the Field

Play 4 x

♩ = 88

G.F. Handel

Cm G⁷ Cm Fm G Cm



6 F E^b Dm Cm G⁷ Cm G⁷ Cm Gm⁷ Cm



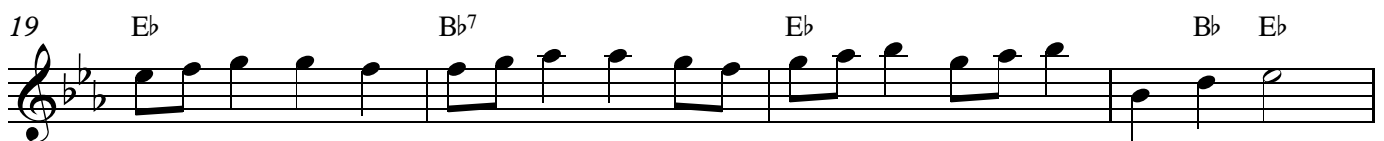
11 E^b Fm B^b



15 E^b



19 E^b B^b7 E^b B^b E^b



23 Cm G⁷ Cm Fm G Cm



28 E E^b Dm Cm G⁷ Cm G⁷ Cm Gm⁷ Cm



Danse Macabre

for the Rosny Waltz

32 bars four times
then coda

Composed by Camille Saint-Saens
Arranged by Kathy Potter

Introduction

Musical score for the Introduction of Danse Macabre, measures 1-32. The score is written in 3/4 time with a key signature of two flats (B-flat and E-flat). The melody is primarily composed of quarter and eighth notes, with some rests and accents. Chord symbols are provided above the staff for each measure.

Measures 1-4: A/D, D

Measures 5-8: Gm, Bb/G, G°7, Eb/G, Gm, D/A, A, D

Measures 13-16: Gm, Bb/G, G°7, Eb/G, Gm, D/A, D

Measures 21-24: Gm, Ab/F

Measures 27-30: Ab/F, Gm

Measures 32-32: Ab/F, Gm

Coda

Musical score for the Coda of Danse Macabre, measures 37-45. The score is written in 3/4 time with a key signature of two flats. The melody is primarily composed of quarter and eighth notes, with some rests and accents. Chord symbols are provided above the staff for each measure.

Measures 37-40: Gm, Bb/G, G°7, Eb/G, Gm, D/A, A, D

Measures 45-45: Gm, G°, Eb/G, Gm, D/A, Gm

Vivaldi in Paradise

A. Vivaldi and V. Kaynor

104 **A** Gm Cm Gm

6 Gm B \flat F F7 B \flat

10 **B** Cm Dm

15 A Dm

19 **C** D Gm C F

23 B \flat Edim A Dm Last Time Only Dm Dm

Introduction only once then
AB AB AB AB A

The Yarralinka

Introduction

Masquerade

Music by Aram Khachaturian

Arranged by Kathy Potter

♩ = 145
Am

Bass clef musical staff with notes and chords: Am, E, E, Am.

Bass clef musical staff with notes and chords: E, E, Am.

A

Treble clef musical staff with notes and chords: Am, Am(maj7), Am7, Am.

Treble clef musical staff with notes and chords: Am6, Am, B7, C, B7.

Treble clef musical staff with notes and chords: C, C(b5)/F, C, C(b5)/F#, B(b5)/F.

Treble clef musical staff with notes and chords: Bb(b5)/E, A(b5)/Eb, Ab(b5)/D, G(b5)/C#, Gb(b5)/C, B7, E.

B

Treble clef musical staff with notes and chords: E7/B, E7, A, A/E, E7/B, E7, A, A/E, B7.

Treble clef musical staff with notes and chords: B7/A, Em/G, Em, B7, B7/A, Em/G.

Treble clef musical staff with notes and chords: B7/F#, B7(b5)/F, B7/F#, B7(b5)/F, E.